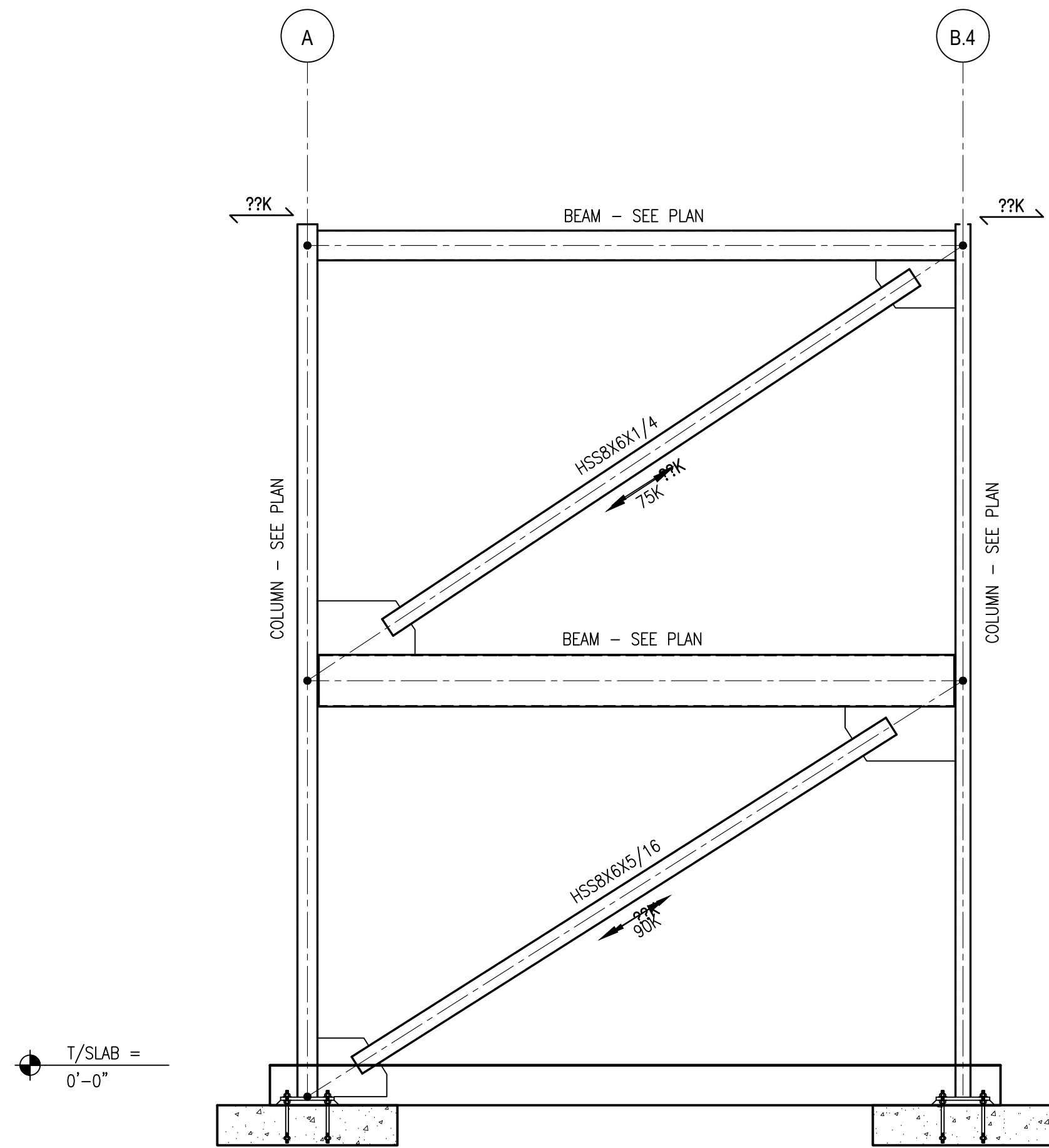
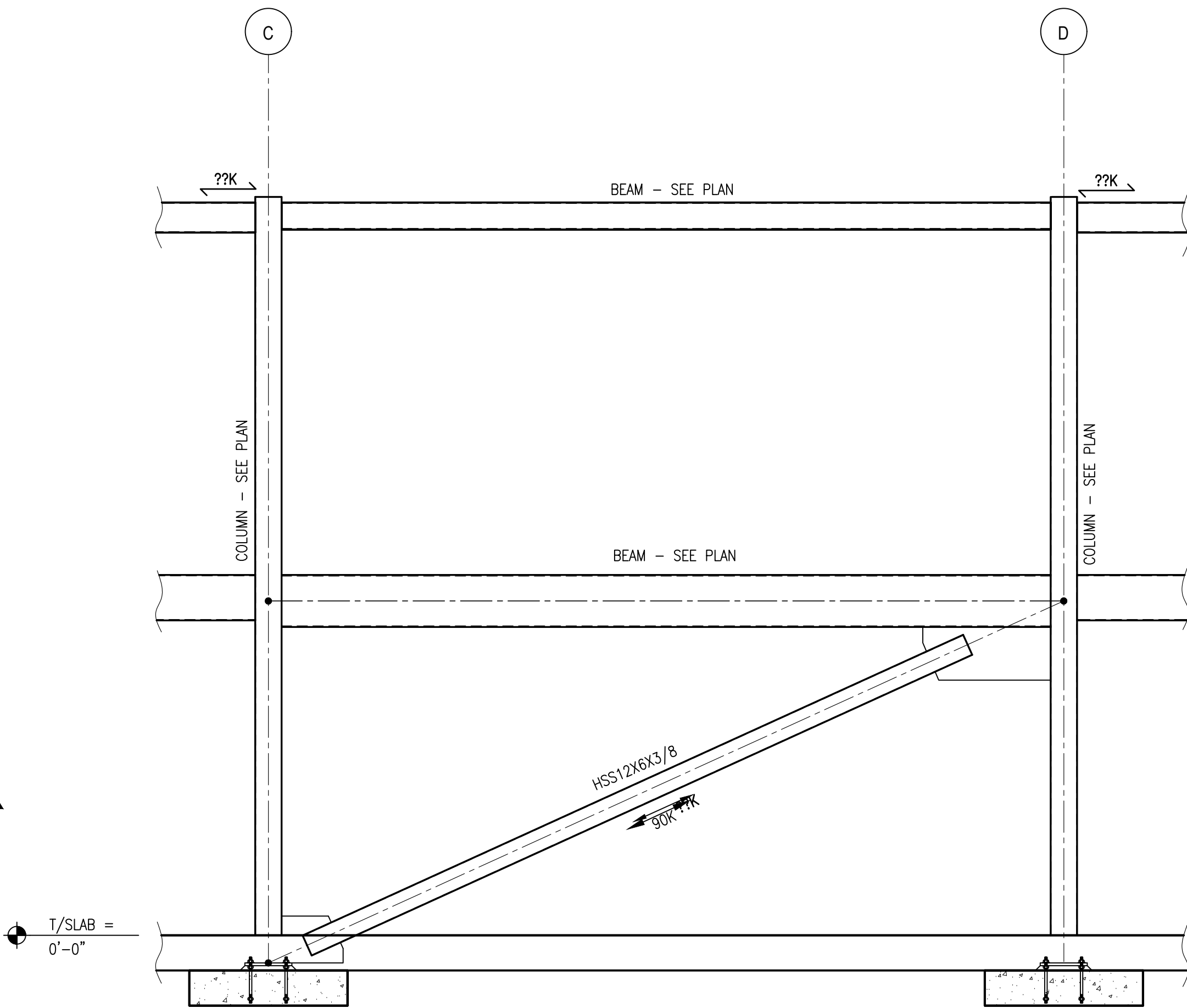


NO.	DATE	DESCRIPTION
1	05.04.20	ADDENDUM 1
	04.16.20	ISSUED FOR BIDDING
	03.20.20	100% REVIEW SUBMISSION
	10.14.19	NCEM DO SUBMISSION
	7.30.19	SD PROGRESS DRAWINGS
	7.11.19	NCEM SD SUBMISSION
Mark	DATE	DESCRIPTION



BRACE FRAME #1 ELEVATION  
SCALE: 1/4" = 1'-0"



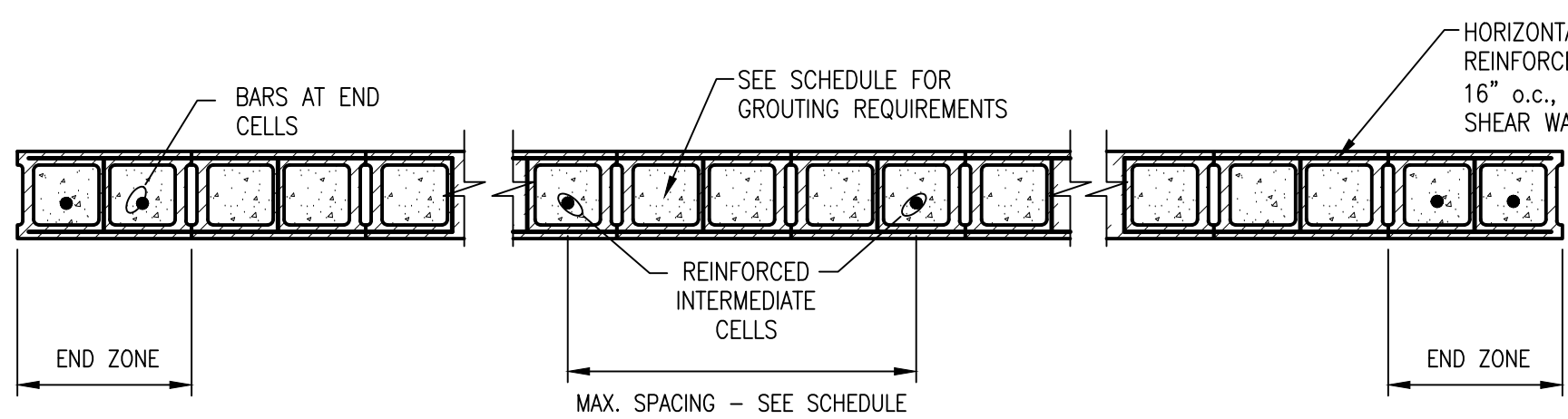
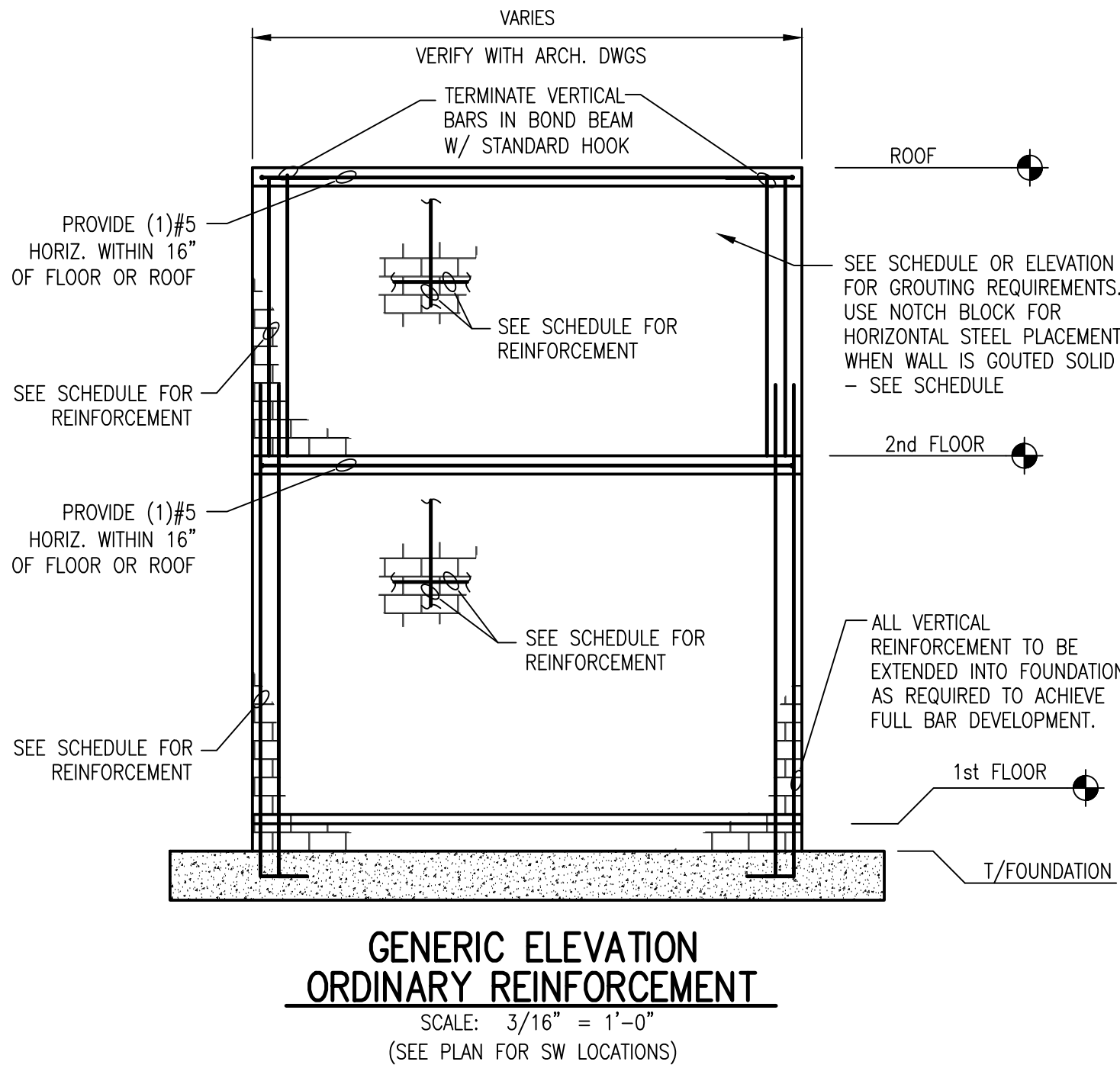
BRACE FRAME #2 ELEVATION  
SCALE: 1/4" = 1'-0"

MASONRY SHEAR WALL (MSW) SCHEDULE				
MSW-1				
MARK	REINF. Ø MOST OUTER CELLS EACH END OF WALL	REINF. IN REMAINING CELLS	HORIZONTAL BARS	GROUT REINFORCING
2nd TO ROOF	(2) #5	#5 @ 48"o.c.	NOT REQ'D.	GROUT REINFORCED CELLS
1st TO 2nd	(4) #5	#5 @ 48"o.c.	NOT REQ'D.	GROUT REINFORCED CELLS

CMU SHEAR WALL NOTES:

- SHEAR WALLS 8" CMU, U.N.O. PROVIDE (2) #5 BAR AT EACH WALL CORNER & AT EACH WALL INTERSECTION - U.N.O. ON WALL SCHEDULE OR ELEVATIONS. GROUT ALL REINFORCED CELLS. U.N.O. IN SCHEDULE.
- EXTEND HORIZONTAL REINFORCEMENT AS INDICATED ON SHEAR WALL ELEVATIONS OR SCHEDULE BUT NOT LESS THAN Ld PER CODE.
- SPLICING BETWEEN VERTICAL BARS SHALL BE NO LESS THAN INDICATED BY TABLE. SEE THIS SHEET FOR REQUIRED SPLICE LENGTH ACCORDING TO BAR SIZE
- T & B = TOP & BOTTOM
- ANY EMBED DOWELS REQUIRED THAT ARE NOT SHOWN ON PLANS OR ELEVATIONS SHALL BE SAME SIZE AND SPACING AS REINFORCEMENT FOR THE NEXT FLOOR. MATCH REINFORCED CELLS ON THE FLOOR BELOW WHERE POSSIBLE.
- ALL WALL DIMENSIONS SHOWN ON THE ELEVATIONS AND ASSOCIATED SECTIONS ARE FOR REFERENCE ONLY. COORDINATE ALL FINAL DIMENSIONS WITH ARCHITECTURAL PLANS. IF SIGNIFICANT CONFLICT EXISTS, CONTACT STRUCTURAL ENGINEER AND ARCHITECT FOR RESOLUTION.
- PLACE HORIZ. REINFORCEMENT IN NOTCHED BLOCK - OR BOND BEAMS.
- 48"o.c. MAX SPACING OF VERT. REINFORCEMENT OR AS INDICATED ON SW SCHEDULE OR ELEVATIONS. REINFORCEMENT THAT STOPS AT OPENINGS OR DOESN'T CONTINUE ON THE FLOOR ABOVE SHALL BE TERMINATED & FULLY ENGAGED IN BOND BEAM.
- CMU WALLS NOT INDICATED AS SHEAR WALLS SHALL HAVE A VERTICAL #5 @ EACH CORNER, @ EACH OPENING, AND @ 48"o.c. MAX. GROUT REINFORCED CELLS. PROVIDE W1.7 HORIZONTAL JOINT REINFORCEMENT @ 16"o.c.
- CMU SHEAR WALLS SHALL HAVE W1.7 HORIZONTAL JOINT REINFORCEMENT @ 16" o.c. U.N.O. PLACE HORIZ. BARS IN NOTCHED BLOCK WHERE NOTED IN ELEVATION (HORIZ BARS REPLACE JOINT REINFORCEMENT)..
- GROUT SHALL BE HELD DOWN 1½" BELOW TOP OF A COURSE TO FORM A KEY AT THE JOINT. SEE STRUCTURAL MASONRY NOTES ON S1.01 FOR ADDITIONAL INFORMATION.
- DOWELS SHALL BE DEVELOPED FOR THE FULL TENSION CAPACITY PER TABLE THIS SHEET.

MINIMUM SPLICING LENGTH (L ) FOR MASONRY	
BAR SIZE	SPLICE LENGTH
#3	16"
#4	22"
#5	26"
#6	43"
#7	60"



TYPICAL REINFORCED CMU SHEAR  
WALL SECTION WITH HORIZONTAL JOINT REINFORCEMENT  
SCALE: 3/4" = 1'-0"